

Installation Card



Before You Start

This installation card has the basic information to set up the Web Point Internet Distribution Center (Web Point) on a computer running Windows 95 or 98®. (To set up Web Point on a Macintosh or a computer running Windows NT®, refer to the *IBM Web Point Internet Distribution Center Reference Manual* located on the *EasyStart CD*.) This side of the card describes setting up Web Point on a new network, the other side provides instructions for adding Web Point to an existing network. There are four basic parts to each of the setup procedures:

- Connecting the hardware
- Setting up a computer to work with Web Point
- Setting up Web Point for Internet access
- Setting up any additional computers in your home or office to work with Web Point

Notes: **Some ISP accounts do not allow or charge extra for Internet sharing. Your ISP access agreement may require you to have more than one account. Check your ISP access agreement for more information.**

If Web Point was installed with a Home Network Connection Center, all cable connections have been made and you may proceed to "Setting Up a New Network." If you purchased Web Point as a stand-alone option, follow the instructions in "Setting Up Hardware."

You can attach an external modem to Web Point for faster Internet access. For more information on installing an external modem, see Chapter 4, "Adding Modems for Internet Access" in the *Reference Manual*.

Required Items

You must provide the following items:

- Internet account: a standard dial-up (PPP) Internet account that allows Internet sharing and Domain Name Server (DNS) issued by an Internet Service Provider (ISP)
- Computer: any computer running Windows 95 or 98 (For Macintosh and NT-based PCs, refer to the *Reference Manual*.)
- Network Interface Card (NIC): an installed (10BaseT) Ethernet network interface card
- TCP/IP: each computer connected to Web Point needs to have properly configured TCP/IP settings
- Telephone line: any standard analog telephone line

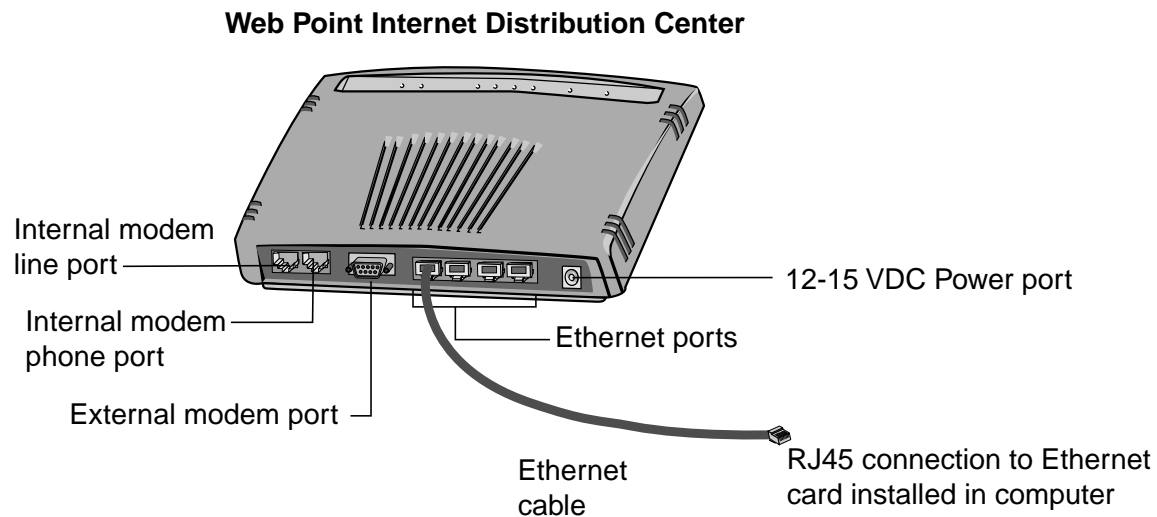
Notes: TCP/IP is part of Windows 95 and 98. You should have the Windows 95 or 98 CD available in case you need to use it during the setup process.

If Web Point was not part of a Home Network Connection Center Installation, one 10BaseT Ethernet network cable and approved 12VDC power adapter are also included in the package.

Setting Up Your Hardware

If your Web Point was installed with a Home Network Connection Center, all the necessary connections have been made. All you need to do is connect the Ethernet cable from your computer to a computer tap located in the wall. Then, proceed to "Setting Up a New Network". If Web Point was not part of a Home Network Connection Center Installation, follow these steps. (**Caution:** Do not touch any cables or perform installation, maintenance, or reconfiguration of this product when there is lightning in the area.)

- 1 Insert one end of the phone cable into the internal modem "line" port on Web Point, and insert the other end into a phone outlet in the wall.
- 2 Insert one end of the Ethernet cable into the Ethernet Port 1 on Web Point, and insert the other end into the Network Interface Card in the computer.
- 3 Plug the 12VDC power adapter into an electrical outlet.
- 4 Insert the mini-connector from the 12VDC power adapter into the power cable port on Web Point.
- 5 Turn on the computer.
- 6 Wait a few seconds.
- 7 Ethernet port light on the front of Web Point should turn on. If the light does not turn on, see "Troubleshooting" in the *Reference Manual*.



Setting Up a New Network

The *EasyStart CD* contains the *EasyStart* application. *EasyStart* performs a series of system checks for your computer's network card and TCP/IP stack. To set up your computer using *EasyStart*, close any open browser windows and follow these steps:

- 1 Insert the *EasyStart CD* into the CD-ROM drive of your computer.
- 2 From the Start menu on the Windows taskbar, click **Run**.
- 3 In the Run dialog box, type:

CD-drive-letter: \setup.exe

For example, if your CD-ROM drive is "D", then type:

d:\setup.exe

Click **OK**. Then click **EasyStart**.

- 4 From the *EasyStart* "Welcome" screen, click **Next**.

EasyStart gives you a choice of Express Setup or Custom Setup. Click **Express Setup**, and then click **Next**. If *EasyStart* does not find your network card, follow the steps in "Setting Up Network Interface Card Manually."

- 5 *EasyStart* gives you the option of installing a browser. If you already have a browser, click **Next**. If you need a browser, click **Install Browser** and follow the instructions on the screen.

Note: If you are installing Netscape Communicator, open Communicator at least once after the installation is complete to make it the default browser.

- 6 In the "DHCP Verifier" screen, click **Configure Web Point**.

- 7 Click **Express Internet**. The "Express Internet" page opens.

- 8 Type the information supplied by your Internet Service Provider (ISP) in the appropriate fields.

- 9 Click **Next**.

If your ISP requires a Login Script, click **Yes**.

When Web Point connects you to the Internet, a successful completion screen will be displayed.

Note: If Web Point is not successful, you will get an error message. Write down the message and see "Troubleshooting" in the *Reference Manual*.

The screenshot shows the 'Express Internet' configuration window. On the left is a navigation pane with buttons for 'Express Internet', 'Add Modem', 'Advanced', 'Diagnostic', 'Status', and 'Home'. The main area is titled 'Express Internet' and contains the heading 'Enter your Internet Service Provider's information.' Below this are several input fields: 'ISP Name', 'ISP Phone Number', 'User Name', 'Password', and 'Cable Password'. At the bottom of these fields is a checkbox labeled 'ISP Requires a Login Script' with 'No' selected. At the bottom right of the window are 'Back' and 'Next' buttons.

Setting Up a Network Interface Card Manually

- 1 If *EasyStart* is open, close it.
- 2 From the Desktop, click **Start, Settings, Control Panel**.
- 3 Double-click **Network**.
- 4 Click **Configure**. Verify that your Ethernet card and TCP/IP are installed by seeing if the Ethernet driver and TCP/IP are visible.
- 5 To verify if IP address is present:
 - Double-click on **TCP/IP**.
 - In the "IP address" screen, the setting should be set to **Obtain IP address Automatically**.

If TCP/IP is not present, follow these steps:

- In Configuration, click **Add**.
 - Click **Protocol**.
 - Click **Microsoft TCP/IP**.
 - In the "IP address" screen, the setting should be set to **Obtain IP address Automatically**.
- 6 After the setup is complete, open your browser and type 192 . 168 . 0 . 11 in the URL line. (If you do not have a browser, you can install NetscapeCommunicator from the *EasyStart CD*.)
 - 7 When the Web Point "Home" screen opens, click **Internet Express**.
 - 8 Type in all appropriate information for Internet Service Provider.
 - 9 Click **Next**.
- If your ISP requires a Login Script, click **Yes**.

Adding Additional Computers

If you have other computers on your network, you are now ready to connect them. Each computer you want to connect to Web Point must have both a Network Interface Card installed and TCP/IP installed. Follow these steps to set up additional computers:

- 1 Connect each computer to Web Point using Ethernet (10BaseT) cables. (If you have a Home Network Connection Center installed, connect Ethernet cables to a computer tap point mounted in the wall.)
- 2 Turn on the computer.
- 3 Insert the *EasyStart* CD in the CD-ROM drive and run *EasyStart*. Follow steps 1 to 5 in "Setting Up a New Network."
- 4 Restart the computer if requested by *EasyStart*.
- 5 The "DHCP Verifier" screen will open. Click **Browse Internet**.

The computer should connect to the Internet through Web Point and the new network you just created.

Notes: If you have trouble connecting to the Internet, see "Troubleshooting" in the *Reference Manual*.
You do not need to reconfigure Web Point when setting up additional computers on the network.

Adding Web Point to an Existing Network

Before you install Web Point in an existing network, find out what kind of addressing scheme your network uses: static, dynamic (DHCP), or non-TCP/IP. (Note: For detailed information on static, dynamic, or non-TCP/IP networks, see Chapter 3 "Attaching to an Existing Network" in the *Reference Manual*.)

The instructions for "Setting Up Web Point in a Static Network" or "Setting Up Web Point in a Dynamic Network" are described on this side of the card. For non-TCP/IP networks, use a PC running Windows 95 or 98 with an Ethernet card installed and follow the steps outlined in "Setting Up a New Network."

Before proceeding with the setup, you should have the following information:

- What is the address range for your network?
- What addresses are unused?
- What is the subnet mask?

Setting Up Web Point in a Static Network

This section describes how to set up your Web Point in a static IP-addressed network that does not have Internet access. As described in "Setting Up your Hardware," attach Web Point to a computer in the existing network using a cable from the computer's network interface card. For more information on Static Networks, see Chapter 3 in the *Reference Manual*.

Important: Make sure your computer has a static IP address. If you want to continue setting your IP address dynamically, skip this section and follow the steps in "Connecting Web Point to Your Dynamic Network."

1 Insert the *EasyStart* CD into the CD-ROM drive of your computer.

2 From the Start menu on the Windows taskbar, click **Run**.

3 In the Run dialog box, type:

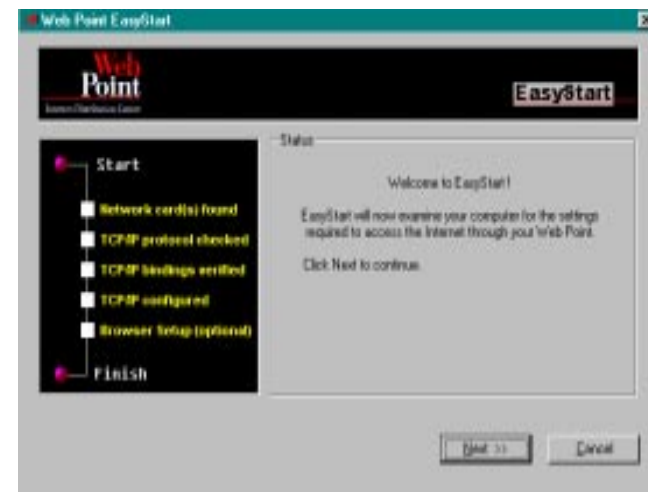
CD-drive-letter:\setup.exe

For example, if your CD-ROM drive is "D", then type:

d:\setup.exe

Click **OK** and then click **EasyStart**.

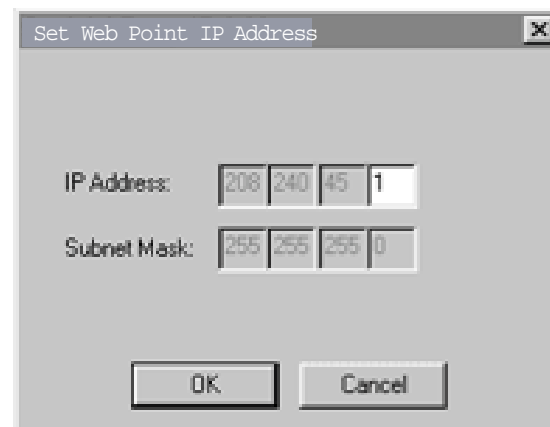
4 From the *EasyStart* "Welcome" screen, click **Next**. *EasyStart* gives you a choice of **Express Setup** or **Custom Setup**. Click **Custom Setup**, and then click **Next**.



5 From the next screen, click **Static IP address**, and then click **Next**. If your computer does not have a static IP address, *EasyStart* presents a list of things you must do. Click **Next** and *EasyStart* will attempt to contact Web Point. If it does not find Web Point on the network, *EasyStart* displays a checklist, and requests that you set the IP address. Follow these steps to set the IP address:

- a Click **Set IP Address**. Select an unused IP address that you want to assign to Web Point.
- b Type the IP address you selected and the network's subnet mask values.
- c Click **OK**.

Note: This address becomes the gateway address and the DNS server address for all computers on your network.



6 From the "Success" screen, click **Next**. *EasyStart* gives you the option of installing a browser. If you already have a browser, click **Next**. If you do not have a browser, click **Install Browser** and follow the directions on the screen.

Note: If you are installing Netscape Communicator, open Communicator at least once to make it the default browser after the installation is complete.

After you have successfully set Web Point's IP address, *EasyStart* will close itself. You may now set your computer's gateway and DNS server addresses.

Setting a Computer's Gateway and DNS Server Addresses

A gateway address allows you to link different networks together. A DNS server address translates domain names to IP addresses. For a detailed definition of gateway and DNS server address, see the "Glossary of Terms" in the *Reference Manual* located on the *EasyStart CD*. To set a computer's gateway and DNS server address, follow these steps:

1 From the Windows Start menu, click **Settings** and then **Control Panel**.

2 Double-click **Network**.

3 In TCP/IP tab, change the following settings:

- Click **Gateway**. Type Web Point's IP address, 192.168.0.11, as the gateway address.
- Click **DNS**. Click **Enable DNS** and type Web Point's IP address as DNS server address. If requested, provide a host name for your computer such as: mycompany.com

4 On the "TCP/IP Properties" screen, click **OK**. Click **OK** again.

If a message appears asking you to restart your computer, click **Yes**. Your computer will restart. You are ready to set up Web Point.

Setting Up Web Point for Internet Access

Open your browser and type Web Point's IP address in the URL line. The Web Point "Home" page opens.

To complete Web Point set up, click **Express Internet**, then fill in the appropriate information. (See steps 7 and 8 in "Setting Up a New Network.")

Setting Up Web Point in a Dynamic Network

This section describes how to use your browser to set up Web Point in a dynamically addressed network that does not have Internet access. The directions in this section assume you will keep your existing DHCP server. For more information about enabling a DHCP server, see "Dynamic IP Address Network" in Chapter 3 of the *Reference Manual*.

If you are installing Web Point without a Home Network Connection Center, attach Web Point as shown in "Setting Up Your Hardware." Attach Web Point to a computer from the existing network using the computer's network cable. If Web Point was installed with a Home Network Connection Center, attach the network cable from a computer on your existing network to a computer tap located in the wall. Because your network uses dynamic addressing, you don't need to use *EasyStart*. The next step will be to set up the DHCP server.

Setting Up the DHCP Server

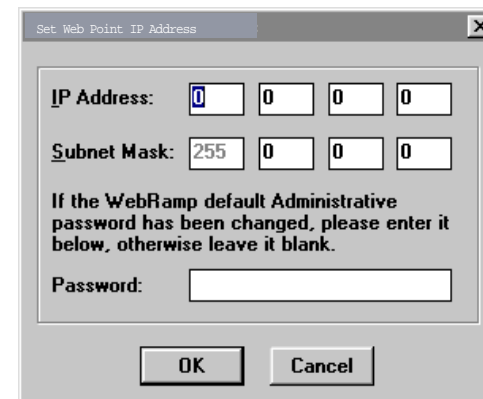
Open your existing DHCP server's network configuration settings, (**Run, Settings, Network, Configuration**) and follow these steps:

- 1 Select an unassigned address and reserve it for Web Point.
- 2 Type the reserved address as the gateway address and the DNS server address to be given out by the DHCP server.
- 3 Restart all of the computers on the network to reset their gateway and DNS information.

You have just completed the required setup for the DHCP server.

Connecting Web Point to Your Dynamic Network

- 1 Use an Ethernet cable to connect Ethernet Port 1 on Web Point to a spare port on the existing network's hub, as shown in "Attaching Web Point to a Network Hub."
- 2 From any computer in the network, use Web Point *WPfinder*, located on the *EasyStart CD*. To change Web Point's IP, address follow these steps:
 - a Insert the *EasyStart CD* into the CD-ROM drive.
 - b From the Start menu of the Windows taskbar, click **Run**.
 - c In the Run dialog box, type:
`CD-drive-letter:\tools\WPfinder.exe`
For example, if the CD drive is "D," then type:
`d:\tools\WPfinder.exe`



The Web Point "WPfinder" screen opens.

- d Click **Set IP Address**.

e Type an unused IP address and the values of your subnet mask. Click **OK**. (To obtain an unused IP address, see Chapter 6, "DHCP Server Configuration" in the *Reference Manual*.)

Setting Up Web Point on Your Dynamic Network

If you need a browser on any of the computers on the network, you can install Netscape Communicator from the *EasyStart CD*. You will then use the browser to set up Web Point on the dynamic network.

Open your browser and type 192.168.0.11 in the URL line. The Web Point "Home" page opens.

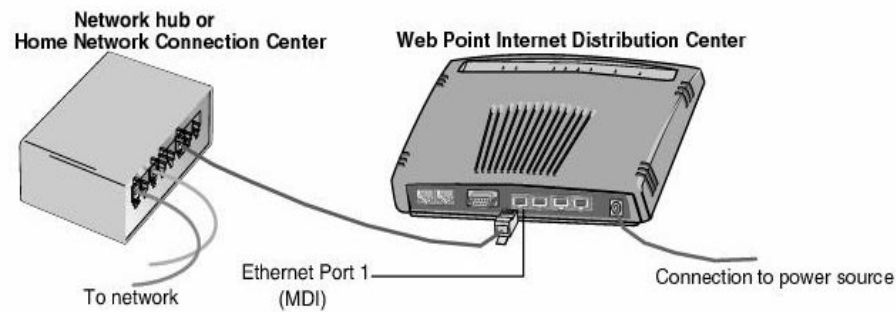
To complete setting up Web Point, click **Internet Express**, and type the appropriate information. (See steps 7 and 8 in "Setting Up a New Network.")

Note: In order to use your DHCP server, you must disable Web Point's DHCP server. For more information, see "Setting Up an Existing DHCP Server" in the *Reference Manual*.

Connecting Web Point to a Network Hub

Follow these steps to connect Web Point through either a network Hub or the Home Network Connection Center.

- 1 Using an Ethernet cable, connect Ethernet Port 1 on Web Point to a spare port either on the existing network's hub or the Home Connection Center Computer Network Module.
- 2 For each of the remaining computers on your network, follow the steps listed in "Setting a Computer's Gateway and DNS Server Addresses."
- 3 If the other computers on your network need a browser, install Netscape Communicator from the *EasyStart CD*.
- 4 Test the connection by opening your browser and entering any known URL.



Trademarks

The following terms are trademarks or registered trademarks of the IBM Corporation in the United States or other countries or both:

- IBM
- Home Director

Other company, product, and service names may be trademarks or service marks of others. Microsoft, Windows, Windows 95, Windows 98, and the Windows NT logo are trademarks or registered trademarks of Microsoft Corporation. Macintosh and AppleTalk are registered trademarks of Apple Corporation. EasyStart is a registered trademark of Ramp Networks, Inc. IPX is a registered trademark of Novell, Inc.

